

COUNTERSUNK BARREL NUT 302 STAINLESS

HEX SOCKET

Countersunk barrel nuts feature the same head diameter with their' mating countersunk hex cap screws to achieve an identical look on both sides of your fastening.

Most commonly used in architectural joinery features with glass, steel and timber materials using a channel design in overhead, vertical panels.

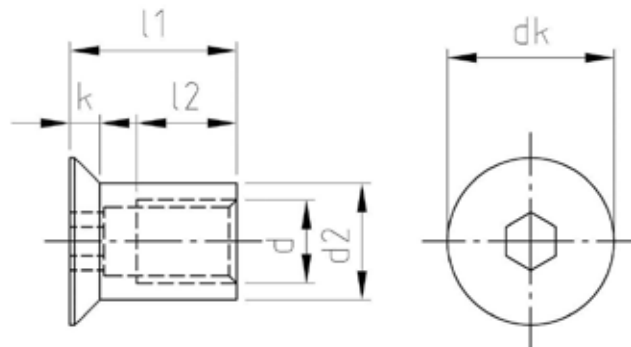
CHARACTERISTICS

- 302 stainless steel
- Hex socket drive
- Countersunk head
- Metric internal thread



DIMENSIONS

- L1 = total length
- d2 = barrel diameter

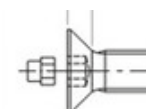


SKU	Internal Thread d [mm]	Barrel Ø d2 [mm]	OAL L1 [mm]	Thread Length L2 [mm]	Head Ø dk [mm]	Head Depth k [mm]	Driver A/F [mm]
6NFXHS1004	M4	5	12	7	8	1.8	2.5
6NFXHS1005	M5	6.5	15	9	10	2.1	3
6NFXHS1006	M6	8	16	9	12	2.3	4
6NFXHS1008	M8	11	16	9	16	2.8	5
6NFXHS1010	M10	14	20	12	20	3.3	6
6NFXHS1012	M12	16	20	12	24	4.4	8
6NFXHS1016	M16	22	25	14	30	5.4	10

OTHER COMPONENTS

Socket Security Plug:

Hex Socket Security Plugs
M4 - M8 Also available



Turned Cup Washer:

Turned Cup Washers 304 Stainless
Also available



Allfasteners® Head Office 78-84 Logistics Street Keilor Park VIC 3042 Australia +61 3 9330 0555

Allfasteners Pty Ltd. ACN 113 948 100 ABN 86 766 075 300

Whilst every care was taken in preparation of this guide, Allfasteners® accepts no responsibility for the accuracy of the information supplied. Copyright © 2019. The contents of this document remains the property of Allfasteners® and may not be reproduced without prior written permission.