

1800 255 349 | techadvice@allfasteners.com.au

AnchorFoot HDG Cast-In Ferrules

AnchorFoot™ HDG Cast-In Ferrules are heavy-duty threaded concrete inserts designed for precast and in-situ concrete construction. Installed into concrete formwork before pouring, these cast-in ferrules create a permanent, reliable anchor point for metric threaded bolts once the concrete has cured.

Each AnchorFoot™ ferrule features a round threaded body combined with a large square foot base and an integrated cross hole for rebar engagement. This design improves load transfer into the concrete, helps resist pull-out forces, and minimises rotation during installation. Manufactured for Australian construction conditions and supported by local engineering expertise, AnchorFoot™ HDG cast-in ferrules are commonly used in precast panels, columns, beams, and structural concrete elements where dependable anchorage is required.

Hot-dip galvanised (HDG) coating provides corrosion protection suitable for general construction and industrial environments.



Key Features

- Round threaded body with a large square foot base for enhanced anchorage
- Cross hole for reo bar insertion, improving load transfer into concrete
- Installed prior to concrete pour as a cast-in threaded insert
- Creates a permanent threaded anchor point after curing
- Designed for precast and in-situ concrete applications
- Supported by an Australian engineering team

Load & Design Disclaimer

Indicative load capacities are provided as a guide only. Final anchor performance is dependent on concrete strength, embedment depth, reinforcement detailing, and installation conditions. Always refer to project-specific engineering design and applicable Australian Standards.

FAQs

Q1. What is an HDG cast-in ferrule used for?

An HDG cast-in ferrule is used to create a permanent threaded anchor point in concrete, allowing bolts or threaded rods to be installed after the concrete has cured.

Q2. Why does the AnchorFoot ferrule use a square foot base?

The square foot base increases bearing area within the concrete, improving resistance to pull-out forces and reducing the risk of rotation under load.

Q3. How is the ferrule installed before concrete is poured?

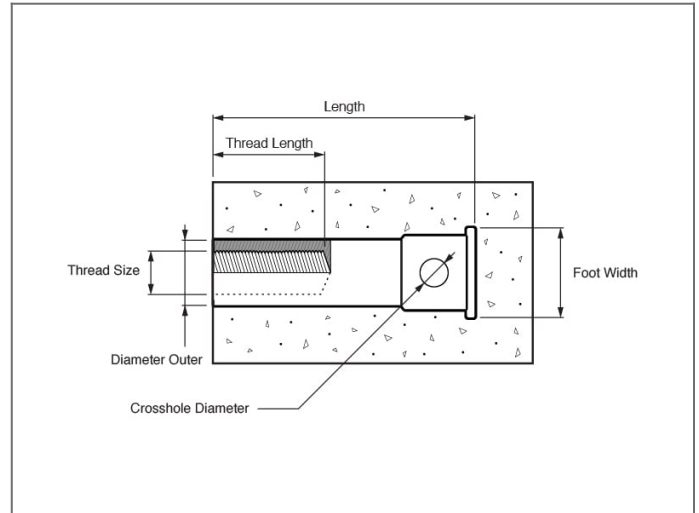
The ferrule is positioned and secured to the reinforcement using the integrated reo bar cross hole prior to pouring concrete.

Q4. Is HDG suitable for outdoor construction use?

Hot-dip galvanised (HDG) coating provides corrosion protection suitable for most general construction and industrial environments.

More Information

Material Grade	Carbon Steel
Coating & Plating	Hot Dipped Galvanised (HDG)
Diameter / Gauge	M12, M16, M20, M24
Thread Type	Metric
Use for	Critical Anchoring, Formwork, Structural Fixing



Technical Information

SKU	Int. Thread x Overall Length:	Thread Insert:	Foot Shape:	Cross Hole Dia.:
2831.0120096	M12 x 96mm Cast-In Ferrule	M12 x 30mm	28mm Square	8mm
2831.0160096	M16 x 96mm Cast-In Ferrule	M16 x 40mm	33mm Square	10mm
2831.0200096	M20 x 96mm Cast-In Ferrule	M20 x 50mm	37mm Square	15mm
2831.0240096	M24 x 96mm Cast-In Ferrule	M24 x 50mm	48mm Square	18mm

Documents



For updates & pricing visit the website.
sales@allfasteners.com.au

