

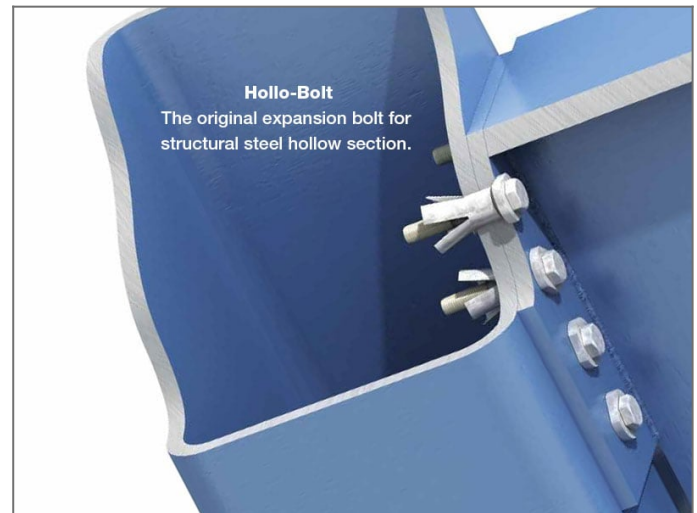
1800 255 349 | [techadvice@allfasteners.com.au](mailto:techadvice@allfasteners.com.au)

## M12 Hollo-Bolt® Structural Expansion Bolt

Avoid the expense and time to create access holes in structural hollow section (SHS). The Hollo Bolt® is a fast and easy solution for fastening SHS when access is limited.

The Hollo Bolt® patented design is the original expansion bolt with real structural properties. The blind bolt system is simply inserted through pre drilled holes and tightened with a torque wrench. M12 Hollo-Bolt can secure up to 69mm of steel material.

- 8.8 grade hi tensile steel
- Hot dipped galvanised



## National Standards

Design to AS 4100 / NZS 3404 (Steel Structures) and ETA and ICC product certification.

## Drill Preparation

Ensure that holes are drilled in both the fixture and the section according to the drilling guidance below. Please note that clearance holes are slightly larger than standard bolt clearance holes to accommodate the sleeve and cone.



## Installation

1. Align pre-drilled fixture and section and insert Hollo-Bolt\*.
2. Grip the Hollo-Bolt collar with an open ended spanner.
3. Using a torque wrench, tighten the central bolt to the recommended torque\*\*.



\*Before tightening, ensure that the materials that are to be connected together are touching.

\*\*See product brochure for correct tightening torque. Power tools, such as an impact wrench, may be used to speed up the tightening of the

1800 255 349 | [techadvice@allfasteners.com.au](mailto:techadvice@allfasteners.com.au)

Hollo-Bolt. However, when using power tools, always complete the tightening process with a torque wrench to ensure the correct torque is applied to the Hollo-Bolt.

Hollo-Bolt® and Lindapter® is a registered trademark of Lindapter International.

## More Information

<b>Delivery</b>	SHIPS IN 3 - 5 DAYS
<b>Material Grade</b>	8.8 Hi-Tensile Steel
<b>Coating &amp; Plating</b>	Hot Dipped Galvanised (HDG)
<b>Head Type</b>	Hexagonal
<b>Driver Type</b>	Hex 1/2" Socket Bit



## Technical Information

SKU	Size	Clamping Thickness	Clamping Thickness	Clearance Dia.	Item
1476.0120060	M12 x 60mm	3 - 25 mm	3 - 25 mm	20 mm (+1.0 / -0.2)	M12 x 60mm Holo-Bolt HDG
1476.0120080	M12 x 80mm	25 - 47 mm	25 - 47 mm	20 mm (+1.0 / -0.2)	M12 x 80mm Holo-Bolt HDG
1476.0120100	M12 x 100mm	47 - 69 mm	47 - 69 mm	20 mm (+1.0 / -0.2)	M12 x 100mm Holo-Bolt HDG

## Documents

Hollo-Bolt Technical Bulletin

Hollo-Bolt® ETA 10/0416



For updates & pricing visit the website.  
[sales@allfasteners.com.au](mailto:sales@allfasteners.com.au)

