

1800 255 349 | [techadvice@allfasteners.com.au](mailto:techadvice@allfasteners.com.au)

## DuraSquirt DTI Structural Washers

### Direct Tension Indicator Washers | Gr8.8 Hi-tensile | Mechanical Galvanised

A compressible steel washer manufactured with protrusions on one side, known as a direct tension indicator washer (DTI). When used with structural bolts, the DTI is designed to compress to correlate with bolt tension.

The DuraSquirt® DTI is the same as other DTI washers except for the orange silicone that has been added to the welds under each bump. As the bolt is tightened, the bump compresses pushing the silicone to the edge of the washer, indicating to the installer that the correct tension has been achieved.



Squirter DTIs are made and certified to ASTM F959. They are also covered in the Australian standard AS4100 steel structures for tension by the use of a direct tension indication device.

## Orange Silicone

When installed, the silicone becomes fully cured, leaving a powdered texture, which remains visible on the steel structure for several years. Simple and easy to include within the bolt assembly, upon installation or inspection, the minimum tension achieved can be observed. The silicone media in the DuraSquirt® DTI have been improved to withstand the elements of wind, heavy rain, and extreme environmental temperatures.

## AS1252

Squirter DTIs can be used with structural bolt assemblies that conform to AS1252 to aid in quickly identifying bolts that have not been tensioned correctly.

## Technical Info

- **Material:** ASTM F959M / Class 8.8
- **Dimensions:** Conform to ASME B18.2.6M
- **Coating:** Mechanical Galvanised to ASTM B695 class 55
- **Heat Treatment:** Through-hardening to a maximum hardness of HRC37

	M12	M16	M20	M24	M30	M36
No. of Bumps	4	4	5	5	7	8
Compression Load Range [ kN ]*	49-59	91-109	205-246	326-391	326-391	475-570

\*Acceptable range of compression loads as per ASTM F959M

## Installation Method

The recommended installation is to position the DTI washer at the nut end of the assembly with the orange Squirt™ material facing towards the steel surface – seen in **method A** below. The assembly can then be tightened from the nut.

It is good practice to store all bolt hardware away from the elements prior to installation; this will prevent corrosion and reduce the effort required to tension bolts properly. The bolt threads and washer face of the hex nut can be lubricated to improve installation by reducing friction.

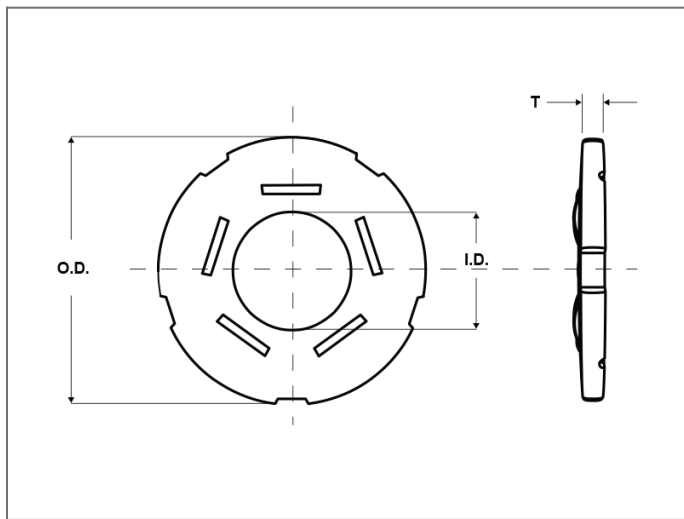
The hole detail in the steel work is critical to the bolt assembly and connection.



Squirter® DTI's and DuraSquirt® are a registered trademarks of Applied Bolting Technology Products, Inc.

## More Information

<b>Delivery</b>	SHIPS IN 1 - 2 DAYS
<b>Material Grade</b>	Gr8
<b>Coating &amp; Plating</b>	Galvanised
<b>Diameter / Gauge</b>	M12, M16, M20, M24, M30, M36



## Technical Information

SKU	Item:	OD / ID, min.	Thickness, min.	Bumps:
1480.0120000	M12 Squirter DTI	25.7 / 13.3mm	2.6mm	4
1480.0160000	M16 Squirter DTI	32.4 / 16.75mm	3.2mm	4
1480.0200000	M20 Squirter DTI	40.4 / 20.95mm	3.6mm	5
1480.0240000	M24 Squirter DTI	48.4 / 25.15mm	4.0mm	5
1480.0300000	M30 Squirter DTI	58.1 / 31.45mm	4.0mm	7
1480.0360000	M36 Squirter DTI	70.1 / 37.75mm	4.8mm	8

## Documents

DuraSquirt® DTI Washers TDS



For updates & pricing visit the website.  
[sales@allfasteners.com.au](mailto:sales@allfasteners.com.au)

